



PRESTIGE 750

SPECIFICITIES

- 2015
- 23,08 m x 5,42 m
- 2 x 1200 V8 MAN 1400 h
- 4 cabins + Crews
- Place de port disponible a la vente côte d'Azur

2.220.000€ TTC



PRESENTED BY



YACHTICÉA

Marc Mellino

Information

Discover the magnificent Prestige 750 yacht, a true marvel of naval engineering that combines elegance, performance and absolute luxury. With its graceful fiberglass (GRP) hull and contemporary design, this yacht offers an unrivalled sailing experience.

The Prestige 750 is a jewel of technology, equipped with two powerful engines (2 x 1200 MAN) that will enable you to sail in complete serenity, whether you want to explore exotic destinations or simply enjoy a day at sea. Its high-performance propulsion system guarantees exceptional cruising speed and unrivalled maneuverability.

On board, the Prestige 750 offers luxurious comfort at every turn. Its refined interior harmoniously combines precious woodwork, sumptuous leathers and top-quality finishes. Spacious, light-filled living spaces, carefully appointed, invite relaxation and conviviality.

This yacht features a host of amenities to keep you entertained and relaxed. Its generous flybridge is the ideal place to bask in the sun while enjoying breathtaking panoramic views. The integrated swim platform provides easy access to the water, and water sports equipment adds a touch of adventure to your days at sea.

This yacht has been meticulously maintained and is in perfect condition. With only 1400 hours of sailing under her belt, she offers a unique opportunity to acquire an exceptional vessel at an attractive price.

Don't miss this opportunity to own the yacht of your dreams. Contact us today to arrange a visit aboard the Prestige 750 and let yourself be seduced by her majestic allure and high-end amenities. Your dream voyage begins here.

SPECIFICATIONS

Type	FLYBRIDGE	Flag	Français
Manufacturer	PRESTIGE	Hull area	
Model	750	Height under beam	
Reference	AAM268	Overall height	0
Hull	Fibreglass (GRP)	Gross tonnage	
Overall Length	23,08	Displ. water hardtop	
Beam	5,42	Fuel tank	4400
Length waterline		Water tank	840

MECHANICAL

Engine manufacturer	MAN	Transmission	Direct shaft
Model	V8	Bowthruster	Variable speed
Engine HP	2 X 1200	Stern thruster	Variable speed
Hours of running	1400	Consumption (l/h)	
Propellers	Bronze 4 pales	Fuel	Diesel
Flaps	2	Max speed	

ELECTRONIC EQUIPMENT

Autopilot	Raymarine SPX-SOL x 2 P70R + remote	Sat. tel.	
VHF	260E + FLY	Generator	2 x KHOLER 20 KVA
GPS	Raymarine Ray 130	Inverter	2500 W
Radar	Raymarine Open Ray 72NM HD	Charger	2
Depth gauge	Raymarine	Watermaker	100l/H
Tridata	Raymarine	BLU	
Bar indicator	1	INMARSAT	
Weather fax		Indic. flaps	LENCO
Satellite	Trackvision M7		

3 Joysticks/ GPS Raymarine Ray 130/Traceur 2 x Ecrans Glass Bridge Raymarine gS165 +Gs Keypad poste pilotage/Sondeur Raymarine DSM300/ Répétiteur 2 x Ecrans Glass Raymarine gS 165 Flt/Pilote automatique Raymarine SPX-SOL 2 x commande P70R + remote sans fils Raymarine de pilote/VHF 260 E x 2 Fly/Antenne TV Satellite KVH M7 + décodeurs TNT SAT dans tt les cabines/Radar Raymarine Open Array 72NM HD/Emmetteur AIS 650 Raymarine/Router 3G Wifi/Caméra thermique Raymarine T400/3 caméras Raymarine de recul/proue et cale moteur

FITTING LAYOUT

Bed(s)	0	Air packaging	TROPICAL 97000 BTU
Cabin(s)	4 cabin(s)	Radio CD	HOME CINEMA BOSE V25 5.1
Crew cabin(s)	2	TV	5
Bathroom	4	DVD	5
Crew bath	1	Ice maker	Cuisine + FLY
WC	4	Microwave	1
Fridge	3	Dishwasher	1
Freezer	55 L	Washing machine	séchant aussi
Hot water	120		1

- HI-FI Home cinéma Bose/TV LED 46 rétractable salon/LED 40 cab Armateur/LED 32 cab VIP et cab marin/LED 22 cab bâbord et cab trib/lecteur DVD dans salon et tt les cabines/matelas armateur TRECA 200x 160/hotte aspirante MIELE/plancher en bois massif dans salon/plaque de cuisson TEPPANYAKI fly/rideaux électriques dans le salon et cabine propriétaire/lits simples cabine bâbord transformable en lit douche comme dans cabine marin/Ambiance des boiseries ALPI CHENE GRIS/ réfrigérateur cuisine 260L + 1 au fly/ four MIELE, lave vaisselle BOSH/ lave linge séchant, plaque cuisson MIELE



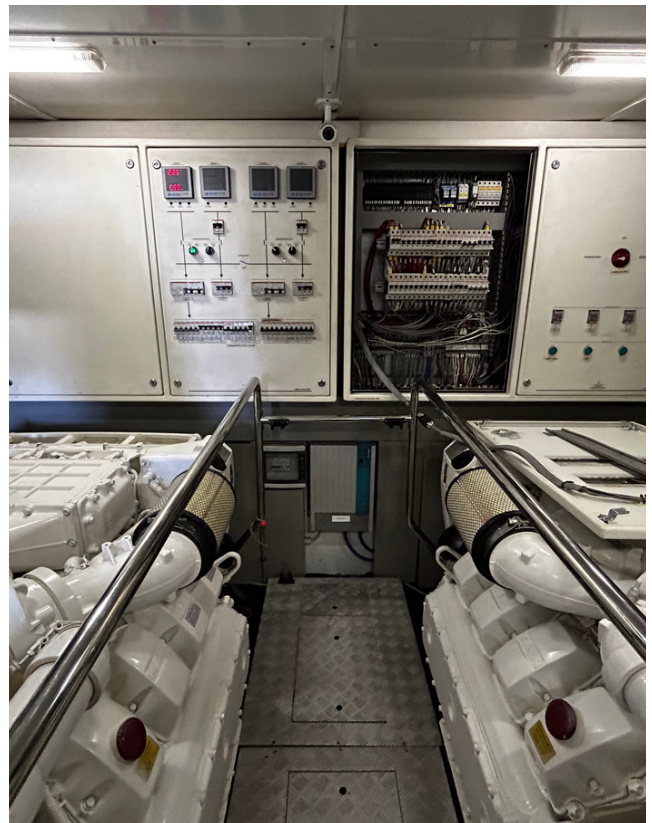
BRIDGE			
Bimini top	HARD TOP avec soft top électrique	Material	
Gangway	OPACMARE INOX Hydr 350	Bow solarium	SILVERTEX TAUPE
Annex	Tempest 340 LIGHT	Stern solarium	SILVERTEX TAUPE
Outboard engine	YAMAHA 40 cv 4TPS	Fly solarium	SILVERTEX TAUPE
Windlass	Electrique 3000W	Outdoor speakers	Cockpit & Fly
Wiper	3	Outdoor shower	YES
Hydro platform	EXTRA LARGE 480 x 190	Outdoor fridge	Fly
Lift		Bath ladder	Inox
Anchor	45	Courtesy light	Passavant, cockpit, fly
Mooring winch	2		
<ul style="list-style-type: none"> • SEAKEEPER Gyroscope/chargeur & convertisseur/ 2 x Générateur KHOLER 20KVA/ Enrouleur électrique de rallonges de prises de quai/ LED sous marin/Winch électrique cockpit & pont avant/passerelle hydraulique 3.50 M/Plateforme de bain hydraulique Extra-Longue 480 x 190, propulseur d'étrave et de poupe/porte latérale semi électrique passavant bâbord/plancher teck fly & passavants/Hard top fly + Soft Top/Rideau électrique occultant de poupe noir 			

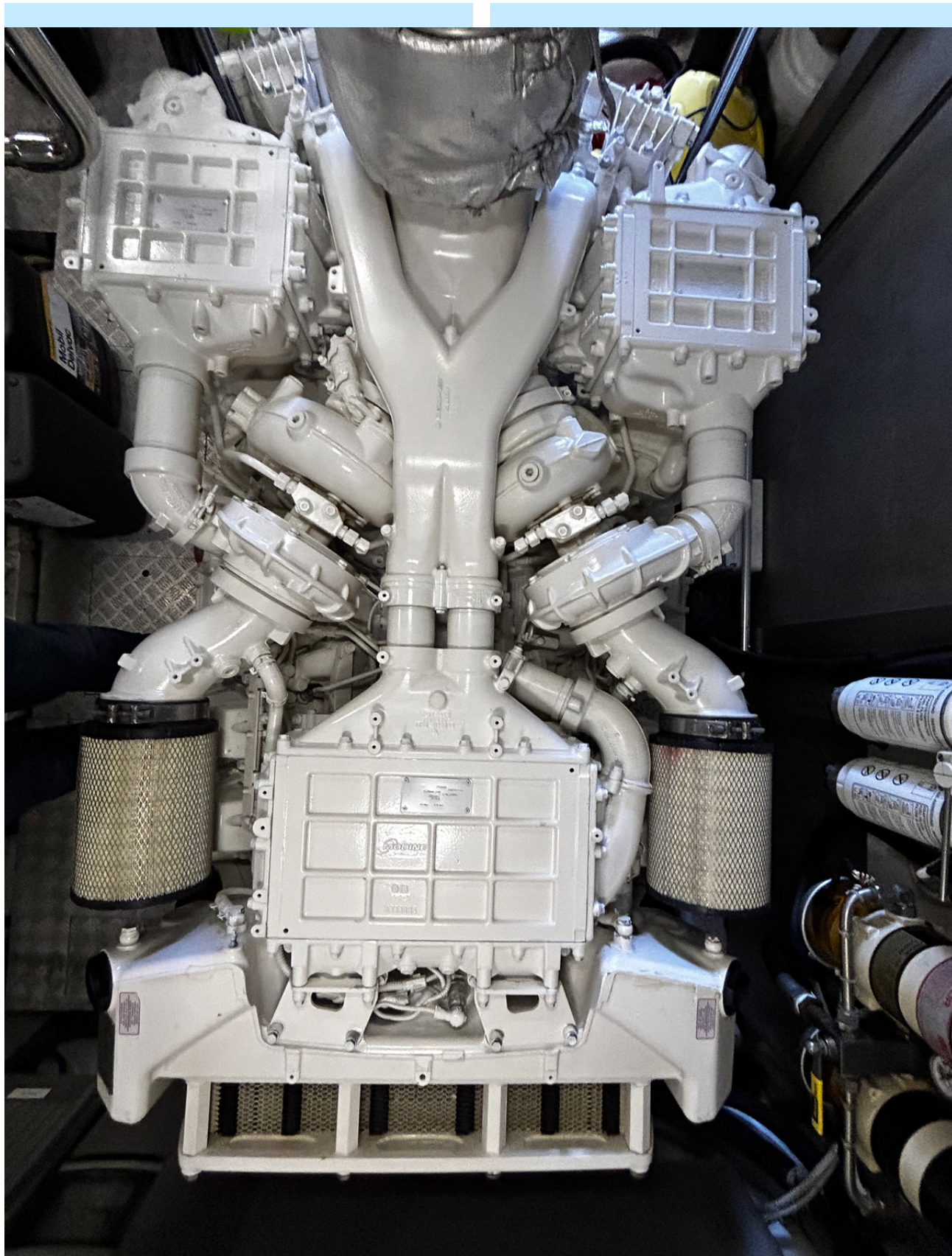
Safety / Misc.			
Life raft	2	Fire alarm	
Video cam.	3	Research light	1

PRESTIGE 750



PRESTIGE 750





PRESTIGE 750



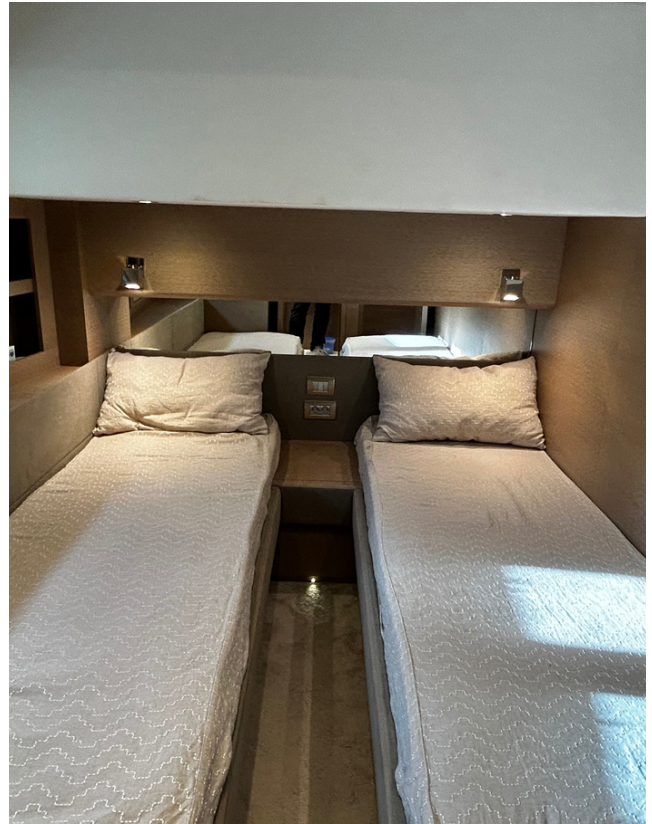
PRESTIGE 750



PRESTIGE 750



PRESTIGE 750



**Place de port disponible à l'achat
côte d'azur de 33 m x 8 avec casier
d'armement en supplément.**